

ISSUANCE		
NO.	DATE	DESCRIPTION
1	12.11.15	BID SET
2	03.18.16	ISSUED FOR CONSTRUCTION

HAGNEY ARCHITECTS
 LLC
 Architectural, Planning & Interior Design
 4615 E. 91st St., Suite 206
 Chicago, Illinois 60648
 Tel. (773) 389-1243
 Fax (773) 389-1243
 E: bhagney@hagneyarchitects.com
 W: www.hagneyarchitects.com

FGM ARCHITECTS
 CHICAGO OAK BROOK OTAWAN

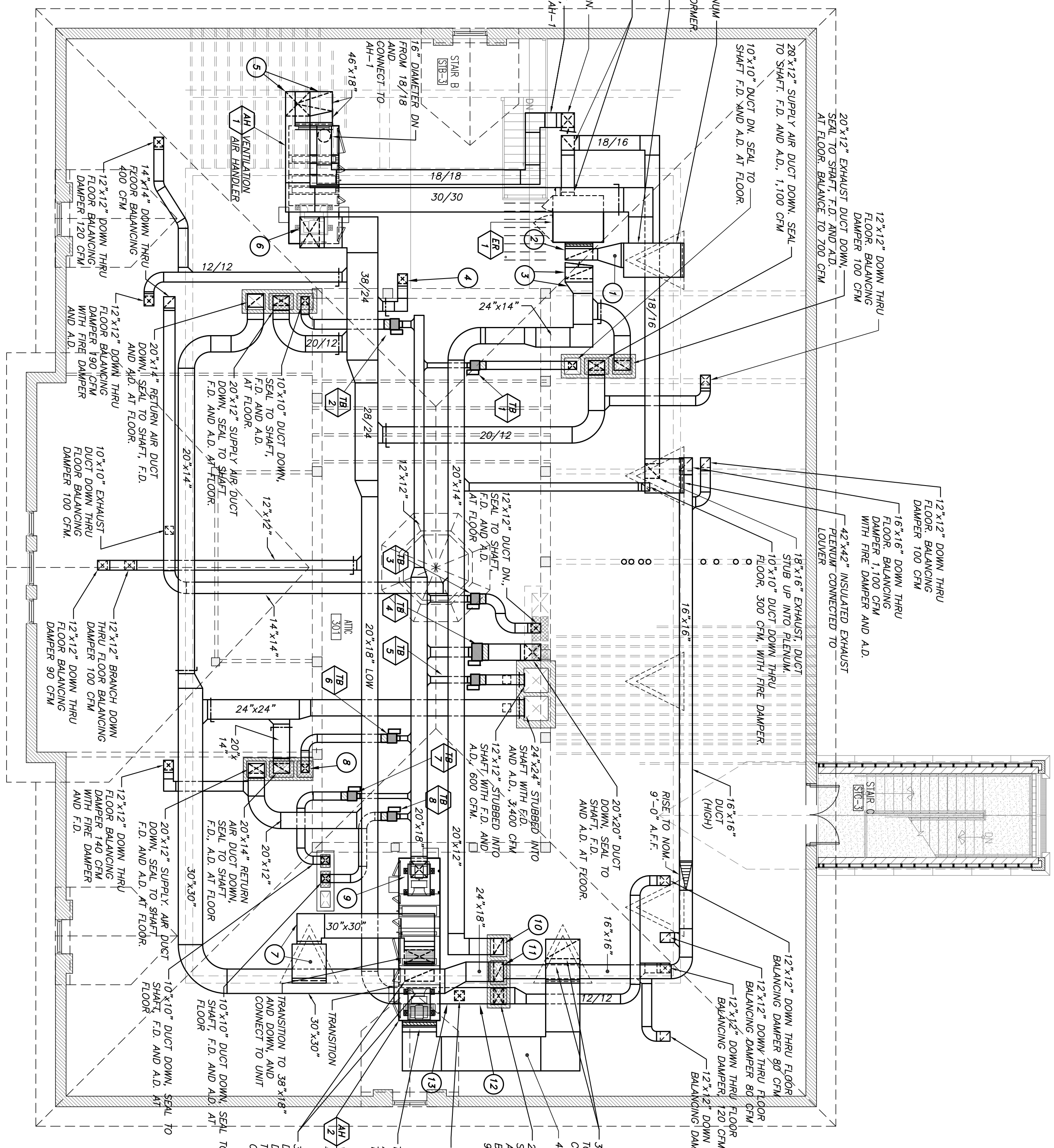
PROFESSIONAL SEAL	DATE	12.11.15
ERRATA/NO DATE	DRAWN	M.D.
	CHECKED	E.C.
	APPROVED	E.C.
PROFESSIONAL DESIGN FIRM	ILL # 154-033293	

FORMER TURNER SCHOOL BUILDING
 FOR SOUTH MAIN SHOPPING CENTER
 1410 BROADWAY STREET
 ROCKFORD, ILLINOIS 61104

OVERALL ATTIC MECHANICAL PLAN - DUCTWORK
 SHEET NO. **M1.31**
 HAGONER JOB NO. 1798
 © 2015 Hagoner/FGM Architects

- PLAN NOTES SHEET M1.31**
ATTIC PLAN - VENTILATION
- CONNECT 34" x 12" FRESH AIR (FA) DUCT TO 42" x 42" FRESH AIR RETURN AND TRANSITION TO 12" x 34" ESBOW DOWN TO UNIT THRU ER-1.
 - 34" x 12" FRESH AIR (FA) DUCT CONNECTION TO UNIT THRU ER-1 OUTSIDE AIR (OA) DUCT COLLAR.
 - TRANSITION 24" x 14" TO 34" x 12" AND DOWN AND CONNECT TO RETURN AIR (RA) DUCT FLANGE OF UNIT THRU ER-1.
 - 12" x 12" DOWN THRU FLOOR, 100 CFM.
 - 30" x 30" DOWN, TRANSITION AND OFFSET TO 48" x 18" MAKE FINAL CONNECTION TO UNIT.
 - 38" x 24" DOWN, TRANSITION TO 18" x 38" AND CONNECT TO UNIT DISCHARGE.
 - 42" x 42" x NOMINAL 42" LONG INKLE AIR RETURN, CONNECT TO 30" x 30" F.A. DUCT.
 - 10" x 10" DOWN AND SEAL TO EXISTING SHAFT.
 - 30" x 18" METAL PRESSURE DUCT DOWN, TRANSITION TO 30" x 18" AND CONNECT TO UNIT DISCHARGE.
 - 20" x 14" DOWN AND SEAL TO EXISTING MASONRY SHAFT, 1,100 CFM.
 - 20" x 14" DOWN AND SEAL TO EXISTING MASONRY SHAFT, 1,100 CFM.
 - 20" x 12" DUCT.

- ATTIC FLOOR PLAN - VENTILATION**
GENERAL NOTES
- INSULATE ALL DUCTWORK IN ATTIC, INCLUDING, BUT NOT LIMITED TO, FRESH AIR DUCTS, RETURN AIR DUCTS AND SUPPLY AIR DUCTS WITH JOINTS AND UNITS. INSULATE DUCTS WITH 2" R-5 INSULATION. DUCTS SHALL BE FINISHED WITH A FACTORY-APPLIED FSK ALUMINUM FOIL FACTORY FINISH. UNITS SHALL BE FINISHED WITH 2" R-5 INSULATION. UNITS SHALL BE FINISHED WITH 2" R-5 INSULATION. UNITS SHALL BE FINISHED WITH 2" R-5 INSULATION.
 - ALL DUCTS PENETRATING INTO ROOMS AND/OR CONNECTING TO THE TOP OF AN EXISTING MASONRY OPENING SHALL HAVE A FIRE DAMPER INSTALLED AT THE POINT OF CONNECTION OR POINT OF PENETRATION. ALL FIRES SHALL BE FINISH BUILT WITH 2" R-5 RATED FIBER GLASS UNITS, AND GALVANIZED STEEL AND HINGED DUCT ACCESS DOORS OF 3/4" INSULATED PROPER MATERIAL, VOLUME DAMPERS IN EACH ROOM/DUCT DISCHARGE WITH LOCK TO HOLD DAMPER IN POSITION FOR PROPER SETTING.
 - PROPER MANUAL VOLUME DAMPERS IN EACH ROOM/DUCT DISCHARGE SHALL BE EITHER SINGLE OR MULTI-BLAD, WITH INDICATING DAMPER WITH LOCK TO HOLD DAMPER IN POSITION FOR PROPER SETTING.
 - DUCTWORK SHALL BE LAYERED WITH THE LOWEST LEVEL, CONSISTING OF FRESH AIR, RETURN AIR, AND SUPPLY AIR. ALL DUCTWORK SHALL BE FINISHED WITH 2" R-5 INSULATION AND SHALL BE FINISHED WITH 2" R-5 INSULATION. ALL DUCTWORK SHALL BE FINISHED WITH 2" R-5 INSULATION.



ATTIC PLAN - VENTILATION
 SCALE: 1/8" = 1'-0"

SCHEDULE OF TERMINAL VAV BOXES

TAG	AIR FLOW		NO. OF	HEATING COIL CAPACITY		INLET	TOTAL	HEATING	REMARKS
	MIN. CFM	MAX. CFM		COIL	FLOW				
TB-1	60	400	2	8.1	1.0	6"	0.10	300	THANE KCMFOR
TB-2	30	300	1	6.1	1.0	5"	0.08	225	THANE KCMFOR
TB-3	165	800	2	16.2	1.5	10"	0.25	600	THANE KCMFOR
TB-4	320	2000	2	41.0	4.0	16"	0.35	1,500	THANE KCMFOR
TB-5	120	600	1	12.2	2.0	8"	0.30	450	THANE KCMFOR
TB-6	60	300	1	6.5	1.0	6"	0.10	240	THANE KCMFOR
TB-7	40	200	1	4.1	0.5	5"	0.04	150	THANE KCMFOR
TB-8	0	200	1	4.1	0.5	5"	0.04	150	THANE KCMFOR

- NOTES**
- TERMINAL BOXES SHALL BE COMPLETE WITH BLOWER, FULLY PROGRAMMABLE D.O.C. CONTROLS WITH ACTUATOR, FACTORY SUPPLIED SENSORS AND CONTROL TRANSFORMER (LINE TO 24 VOLT).
 - 1-1/2" FIBER GLASS INSULATION SHALL BE INSTALLED AROUND ALL DUCTWORK AND DAMPERS.
 - 1-1/2" FIBER GLASS INSULATION SHALL BE INSTALLED AROUND ALL DUCTWORK AND DAMPERS.
 - INSULATE ALL DUCTWORK WITH 2" R-5 INSULATION.

OVERALL ATTIC MECHANICAL PLAN - DUCTWORK
 1/8" = 1'-0"